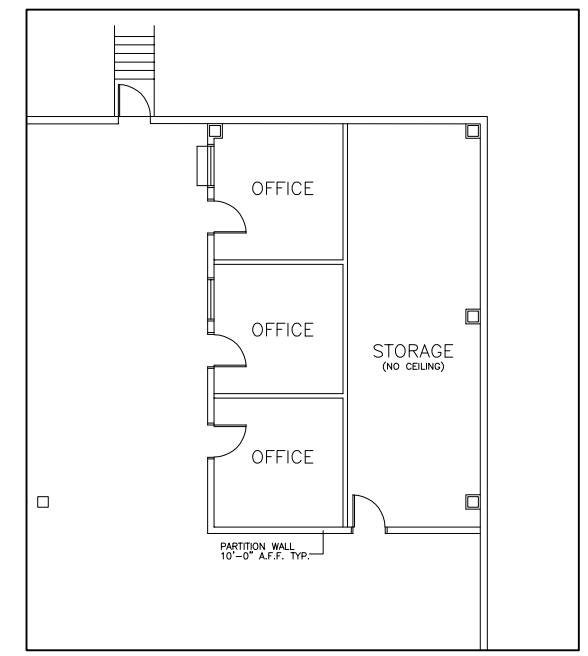


OVERALL PLAN

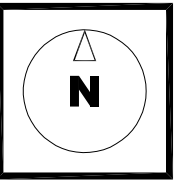


SHIPPING OFFICE
SCALE: 1/8"=1'-0"

AREA STATISTICS

SITE AREA	4.27 ACRES
OFFICE GROUND FLOOR	6,796 SQ.FT.
OFFICE SECOND FLOOR	6,807 SQ.FT.
SHIPPING OFFICE	1,008 SQ.FT.
TOTAL OFFICE AREA	13,603 SQ.FT.
TRANSFORMER VAULT	1,142 SQ.FT.
WAREHOUSE	65,893 SQ.FT.
TOTAL G.F.A	81,646 SQ.FT.
PARKING SHOWN	103 CARS
TRUCK LEVEL DOORS	13
DRIVE-IN DOORS	2

AREAS SHOWN ARE APPROXIMATE AND FOR PRELIMINARY USE ONLY.



7595 TRANMERE DRIVE
MISSISSAUGA ONTARIO

FLOOR PLAN
SCALE: 1/16"=1'-0"
DATE: 20 JAN. 2021