

**KEYPLAN**

**AREA STATISTICS:**

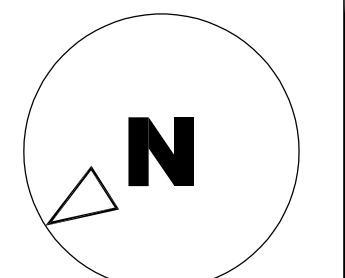
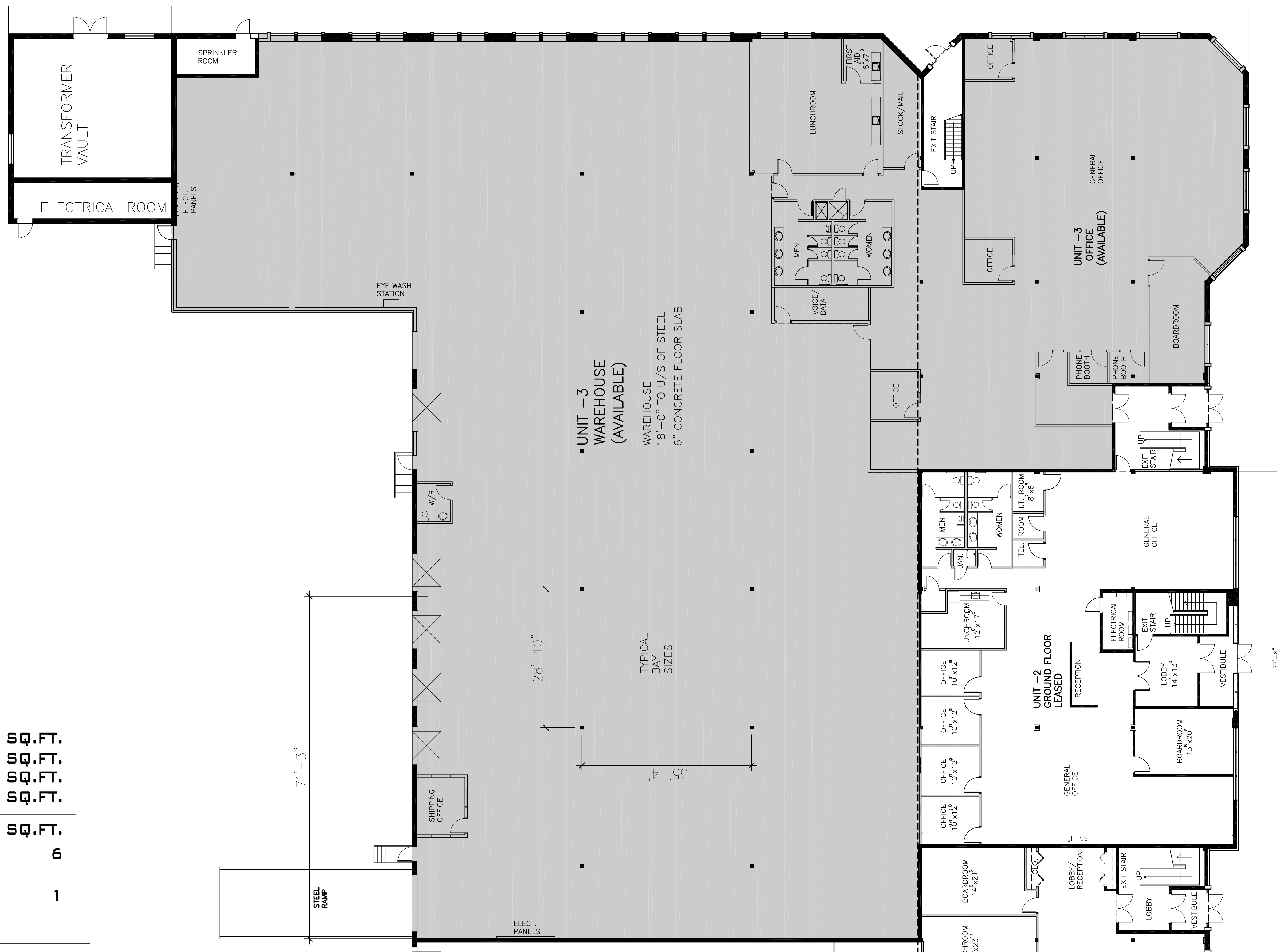
**#5865 McLAUGHLIN RD.  
UNIT -3**

|                             |               |
|-----------------------------|---------------|
| GROUND FLOOR                | 7,495 SQ.FT.  |
| WAREHOUSE                   | 20,281 SQ.FT. |
| PROPORTION OF COMMON STAIRS | 775 SQ.FT.    |
| PROPORTION OF COMMON AREAS  | 322 SQ.FT.    |

**RENTABLE AREA 28,873 SQ.FT.**

|                                       |   |
|---------------------------------------|---|
| TRUCK LEVEL DOORS<br>(8'-0" x 10'-0") | 6 |
| DRIVE-IN DOOR<br>(12'-0" x 12'-0")    | 1 |

AREAS SHOWN ARE APPROXIMATE AND FOR PRELIMINARY USE ONLY.



**5865 McLAUGHLIN ROAD - UNIT 3**  
MISSISSAUGA ONTARIO

**FLOOR PLAN**  
SCALE: 3/32" = 1'-0"  
DATE: AUG 05 2020