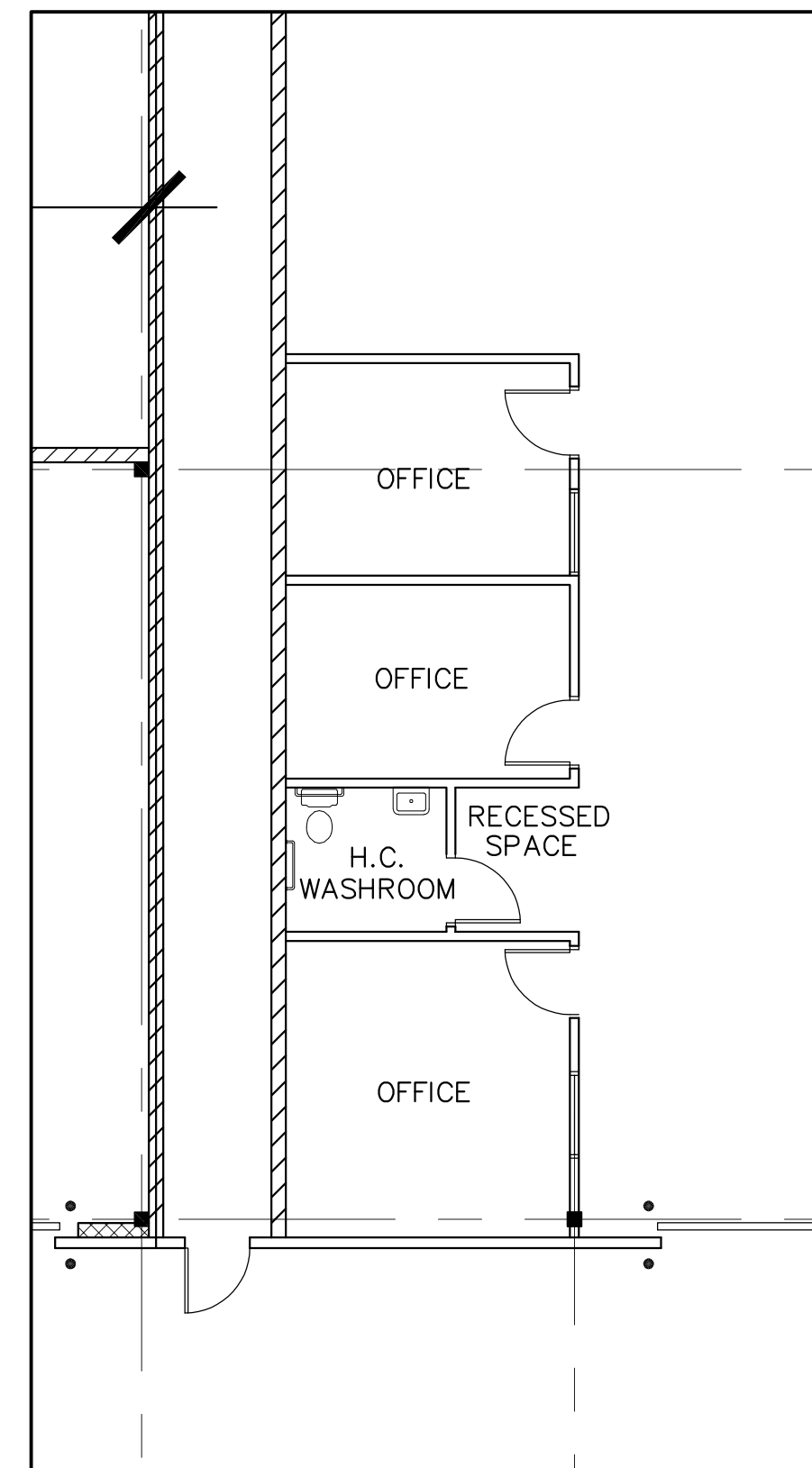


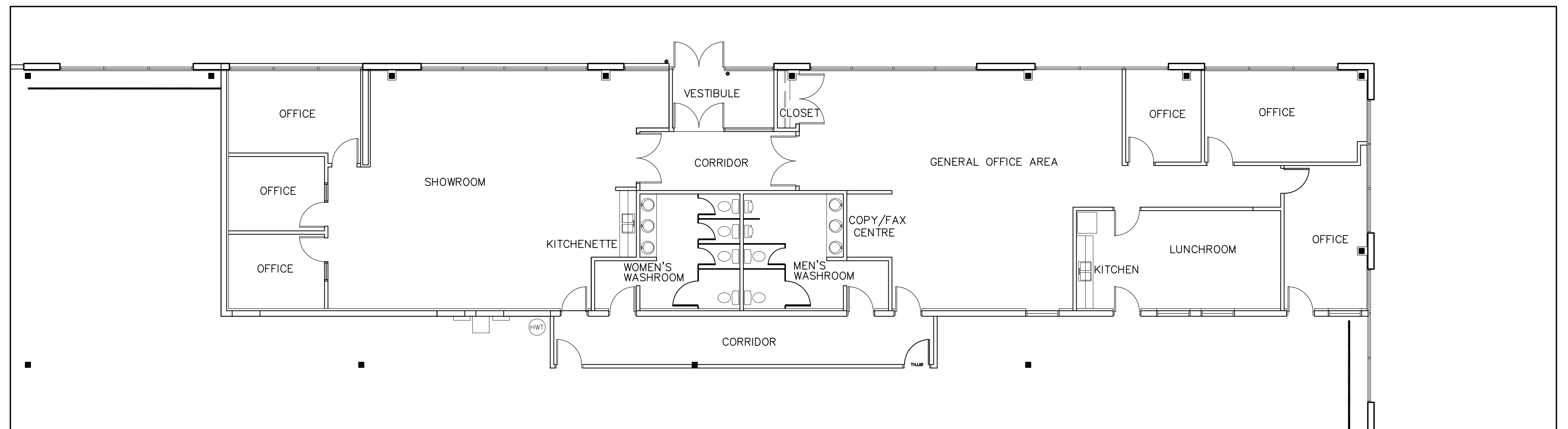
UNIT PLAN
SCALE: 1"=30'-0"



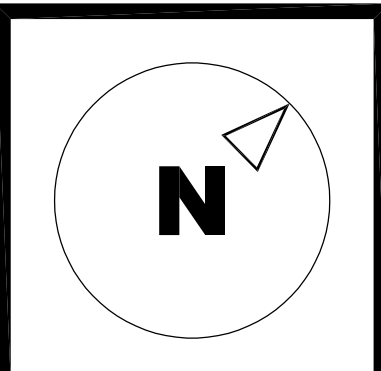
SHIPPING OFFICE (UNIT-2)
SCALE: 1/8"=1'-0"

BUILDING AREA STATISTICS:	
UNIT-1 LEASED	
OFFICE	8,523 SQ.FT.
LOCKER ROOMS	1,676 SQ.FT.
STORAGE AREA	1,462 SQ.FT.
SHIPPING OFFICE	432 SQ.FT.
WAREHOUSE W/R	267 SQ.FT.
WAREHOUSE	138,061 SQ.FT.
APPORTIONED COMMON AREA	631 SQ.FT.
COMMON CORRIDOR	897 SQ.FT.
TOTAL G.F.A.	151,949 SQ.FT.
TRUCK LEVEL DOORS (8'-0"x10'-0")	8
TRUCK LEVEL DOORS (9'-0"x10'-0")	6
DRIVE-IN DOOR (12'-0"x14'-0")	1
UNIT-2 AVAILABLE	
OFFICE	4,484 SQ.FT.
SHIPPING OFFICE	560 SQ.FT.
WAREHOUSE	94,271 SQ.FT.
APPORTIONED COMMON AREA	417 SQ.FT.
COMMON CORRIDOR	593 SQ.FT.
TOTAL G.F.A.	100,325 SQ.FT.
TRUCK LEVEL DOORS (8'-0"x10'-0")	9
DRIVE-IN DOOR (12'-0"x14'-0")	1
TOTAL BLDG. PARKING	400
TOTAL BUILDING AREA	252,274 SQ.FT.

*AREAS SHOWN AREA APPROXIMATE AND FOR PRELIMINARY USE ONLY



OFFICE PLAN (UNIT-2)
SCALE: 1/8"=1'-0"



5650 KEATON CRESCENT
MISSISSAUGA, ONTARIO

FLOOR PLAN
SCALE: 1"=30'-0" / 3/32"=1'-0"
DATE: NOV. 18, 2020