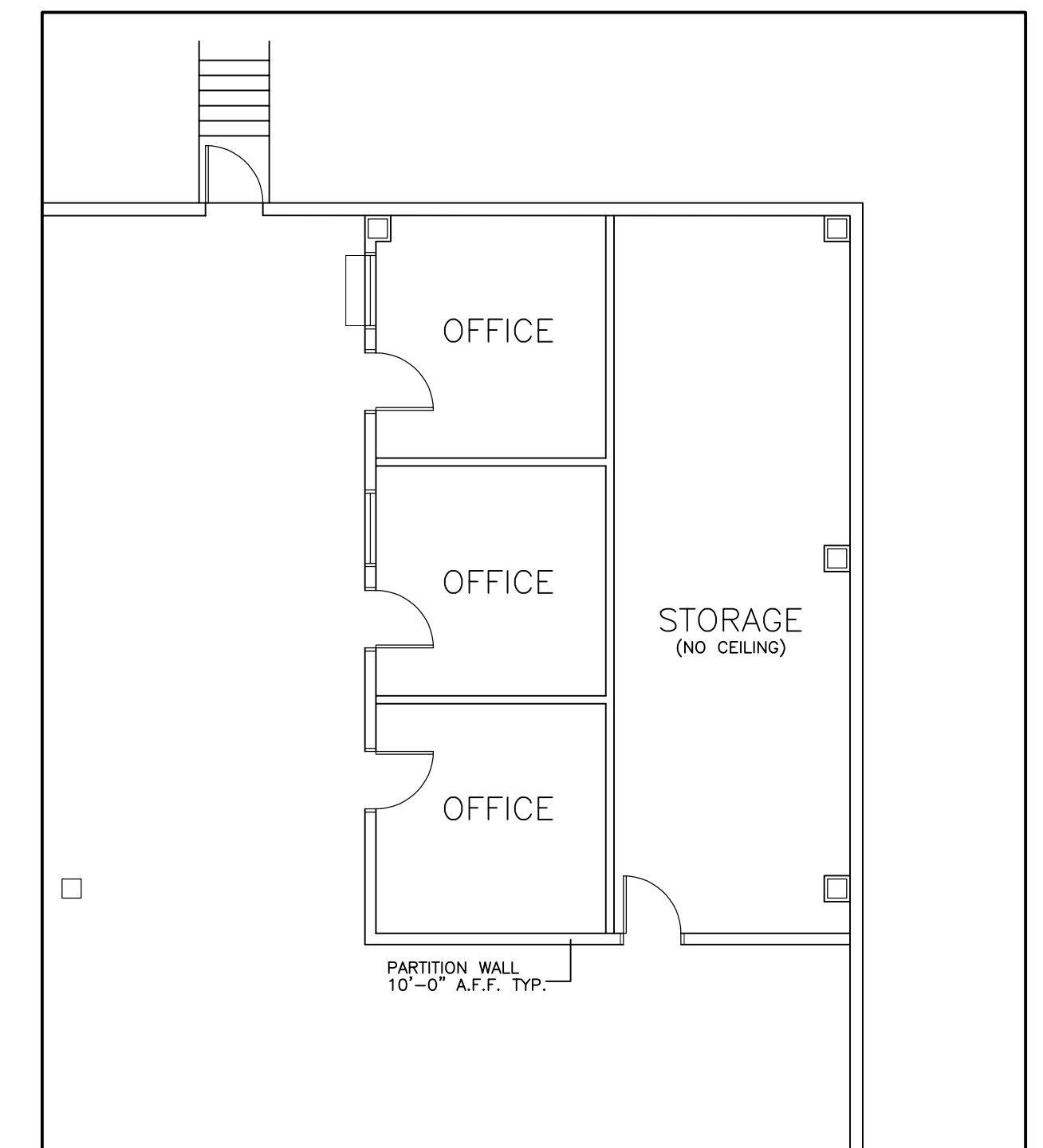


**OVERALL PLAN**

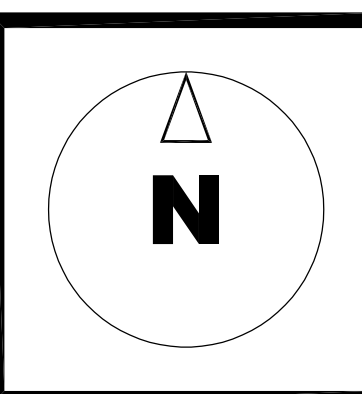


**SHIPPING OFFICE**  
SCALE: 1/8" = 1'-0"

**AREA STATISTICS**

SITE AREA	4.27 ACRES
OFFICE GROUND FLOOR	6,796 SQ.FT.
OFFICE SECOND FLOOR	6,807 SQ.FT.
SHIPPING OFFICE	1,008 SQ.FT.
<b>TOTAL OFFICE AREA</b>	<b>13,603 SQ.FT.</b>
TRANSFORMER VAULT	1,142 SQ.FT.
<b>WAREHOUSE</b>	<b>65,893 SQ.FT.</b>
<b>TOTAL G.F.A</b>	<b>81,646 SQ.FT.</b>
PARKING SHOWN	103 CARS
TRUCK LEVEL DOORS	13
DRIVE-IN DOORS	2

AREAS SHOWN ARE APPROXIMATE AND FOR PRELIMINARY USE ONLY.



7595 TRANMERE DRIVE  
MISSISSAUGA ONTARIO

**FLOOR PLAN**

SCALE: 1/16" = 1'-0"  
DATE: 13 AUG. 2020