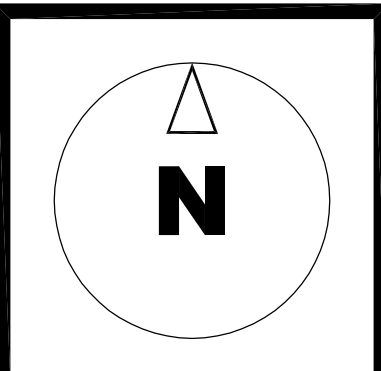
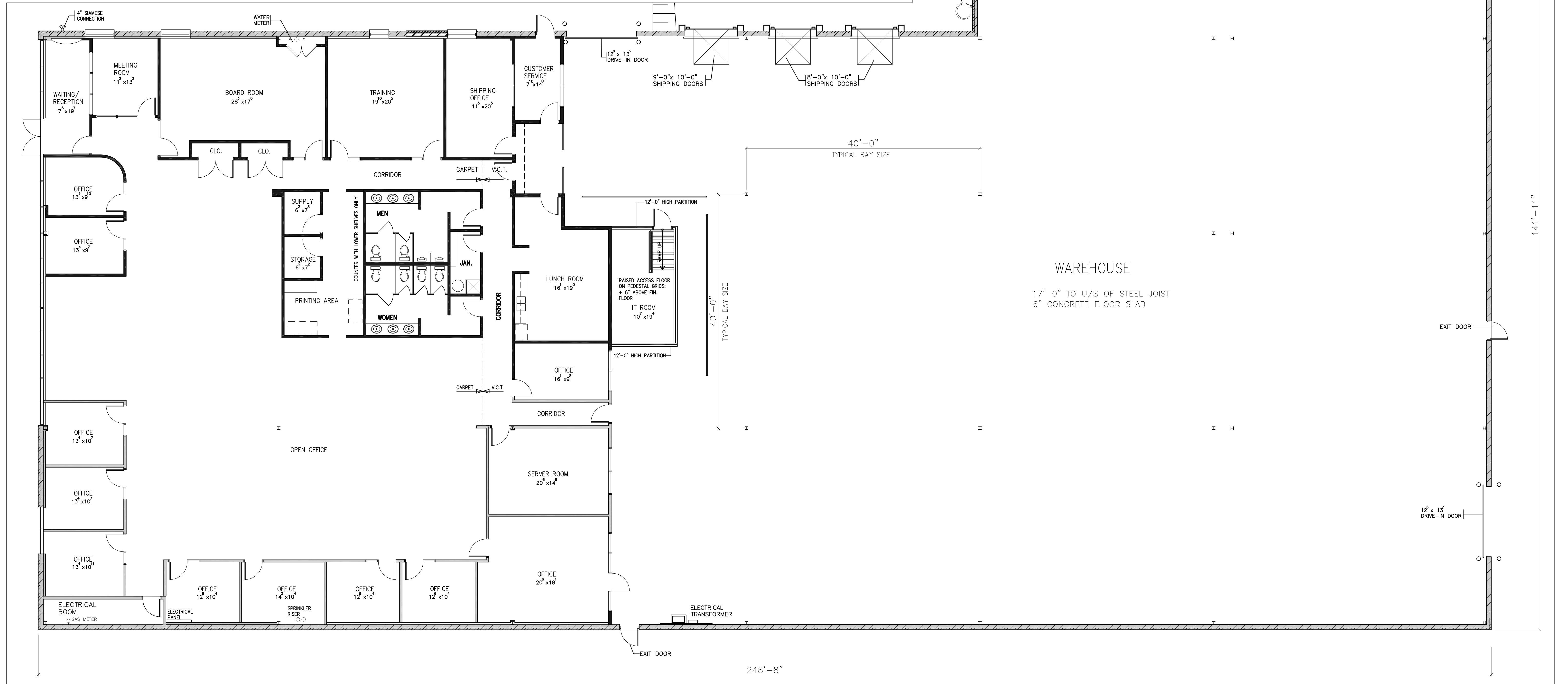


**AREA STATISTICS**

<b>SITE AREA</b>	<b>1.73 ACRES</b>
<b>BUILDING AREA</b>	
<b>OFFICE</b>	<b>9,757 SQ.FT.</b>
<b>WAREHOUSE</b>	<b>19,062 SQ.FT.</b>
<b>ELECT. / SPRINKLER RM.</b>	<b>126 SQ.FT.</b>
<b>TOTAL G.F.A.</b>	<b>28,945 SQ.FT.</b>
<b>TRUCK LEVEL DOOR (9'-0"W X 10'-0"H)</b>	<b>1</b>
<b>TRUCK LEVEL DOORS (8'-0"W X 10'-0"H)</b>	<b>2</b>
<b>DRIVE-IN DOOR (12'-0"W X 13'-0"H)</b>	<b>2</b>
<b>PARKING SHOWN</b>	<b>89</b>

AREAS SHOWN ARE APPROXIMATE AND FOR PRELIMINARY USE ONLY



3230 AMERICAN DRIVE  
MISSISSAUGA, ONTARIO

**FLOOR PLAN**  
SCALE: 1/8" = 1'-0"  
DATE: 27 OCT. 2017